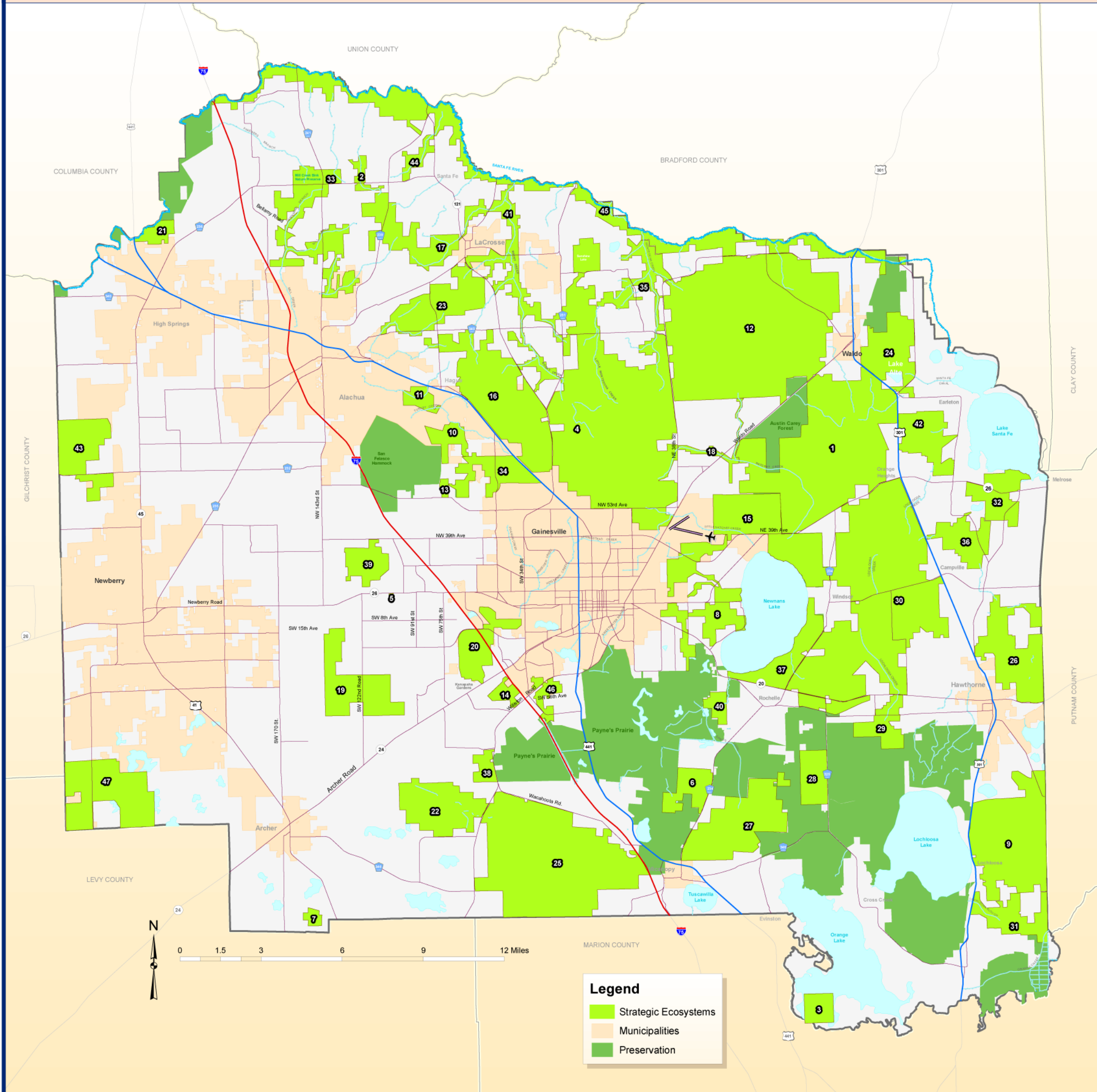


STRATEGIC ECOSYSTEMS - ALACHUA COUNTY, FLORIDA

Introduction

A few years ago Alachua County conducted two studies to create an Ecological Inventory for the County. The first study was conducted in 1987 and the second in 1996. The studies aimed to identify, inventory, map, describe, and evaluate the most significant natural biological communities, both upland and wetland, that were in private ownership in Alachua County and to make recommendations for protecting these natural resources. The studies do not focus on the public water bodies and publicly owned lands in the County.

SITE NUMBER	SITE NAME	PARAMETER RANK	SUB-PARAMETER RANK
1	AUSTIN CARY FLATWOODS	18	15
2	BEECH VALLEY	47	47
3	BIRD ISLAND	18	28
4	BUCK BAY FLATWOODS	18	20
5	BUZZARDS ROOST	24	20
6	CHACALA POND	18	15
7	DOMINO HAMMOCK	27	26
8	EAST SIDE GREENWAY	18	14
9	EAST LOCHLOOSA FOREST	12	26
10	EAST SAN FELASCO HAMMOCK	33	28
11	NORTH SAN FELASCO HAMMOCK	24	23
12	NORTHEAST FLATWOODS	18	15
13	FOX POND	5	5
14	FRED BEAR HAMMOCK	40	39
15	GUM ROOT SWAMP	6	8
16	HAGUE FLATWOODS	24	23
17	HASAN FLATWOODS	43	44
18	HATCHETT CREEK	33	31
19	HICKORY SINK	27	36
20	HOGTOWN PRAIRIE	3	3
21	HORNBSBY SPRINGS	2	2
22	KANAPAHA PRAIRIE	12	9
23	SOUTH LACROSSE FOREST	40	39
24	LAKE ALTO SWAMP	27	31
25	BARR HAMMOCK - LEVY LAKE	6	6
26	LITTLE ORANGE CREEK	40	39
27	LOCHLOOSA FOREST WEST	3	4
28	LOCHLOOSA FOREST ADDITIONS	8	9
29	LOCHLOOSA CREEK	12	20
30	LOCHLOOSA CREEK FLATWOODS	8	9
31	LOCHLOOSA SLOUGH	12	15
32	SOUTH MELROSE FLATWOODS	27	31
33	MILL CREEK	12	9
34	MILLHOPPER FLATWOODS	27	23
35	MONTEOCHA CREEK	33	39
36	MORAN'S PRAIRIE	43	45
37	EAST SIDE NEWNANS LAKE	6	13
38	PAYNES PRAIRIE WEST	33	31
39	PINE HILL FOREST	43	36
40	PRAIRIE CREEK	8	6
41	ROCKY CREEK	33	31
42	SALUDA SWAMP	33	36
43	BUDA SANDHILLS	46	46
44	SANTA FE CREEK	33	43
45	SANTA FE RIVER	1	1
46	SERENOLA FOREST	27	28
47	WATERMELON POND	12	15



0 1.5 3 6 9 12 Miles

Legend

- Strategic Ecosystems
- Municipalities
- Preservation



Prepared at:
 Board of Commissioners
 Alachua County, Florida
 Department of Growth Management
 10 SW 2nd Avenue, Gainesville, FL 32601
 (352) 374-5249
<http://growth-management.alachua.fl.us/>

Data Sources
 KBN/Golder Associates, 1996. "Ecological Inventory of Alachua County, Florida."
 Report prepared for the Alachua County Department of Growth Management by
 KBN/Golder Associates.
 To view this map and other related resources go to:
<http://ecosystems.alachua.fl.us/>

Notes:
 Map and Documentation are located at:
<http://growth-management.alachua.fl.us/gis/gallery/postermaps.php>
 Poster Size: 36 x 30
 Date of Production: 11/27/2008
 File on Disk: M:\Projects\Poster_Maps\Strategic_Ecosystems.mxd