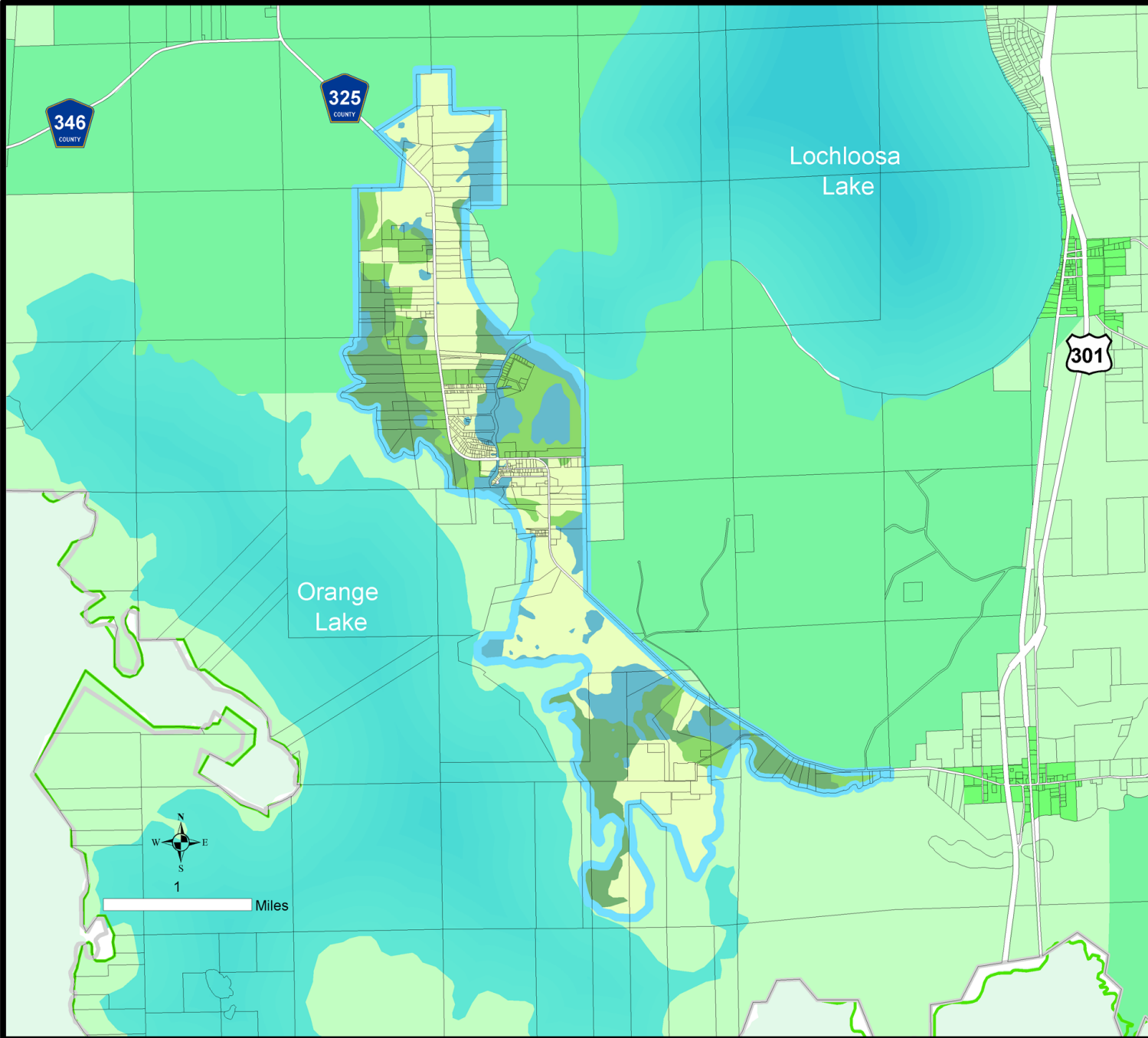


Cross Creek Special Area Study



Legend

- Special Area Study
- Water Bodies
- Municipalities

Future Land Use categories

- Rural/Agriculture
- Preservation
- CCSAS Wetlands
- CCSAS Active Use Zone
- CCSAS Exceptional Upland Habitat
- CCSAS Hammock

NOTES:

All Special Area Study Maps are to be applied with the Special Area Study policies in Section 8.0 of the Future Land Use Element of the Alachua County Comprehensive Plan 2030. This map, and all Special Area Study maps, are part of the Future Land Use Map Series of the Alachua County Comprehensive Plan 2030. Future land uses for areas outside the Special Area Study boundaries are shown on this map only for informational purposes. The official Future Land Use designations for unincorporated Alachua County are shown on the "Future Land Use Map 2030 – Alachua County, Florida." Date of Production: 08/23/11

PREPARED AT:

Alachua County
 Department of Growth Management
 10 SW 2nd Avenue
 Gainesville, FL 32601
 (352) 374-5249
<http://growth-management.alachuacounty.us>



1 Miles