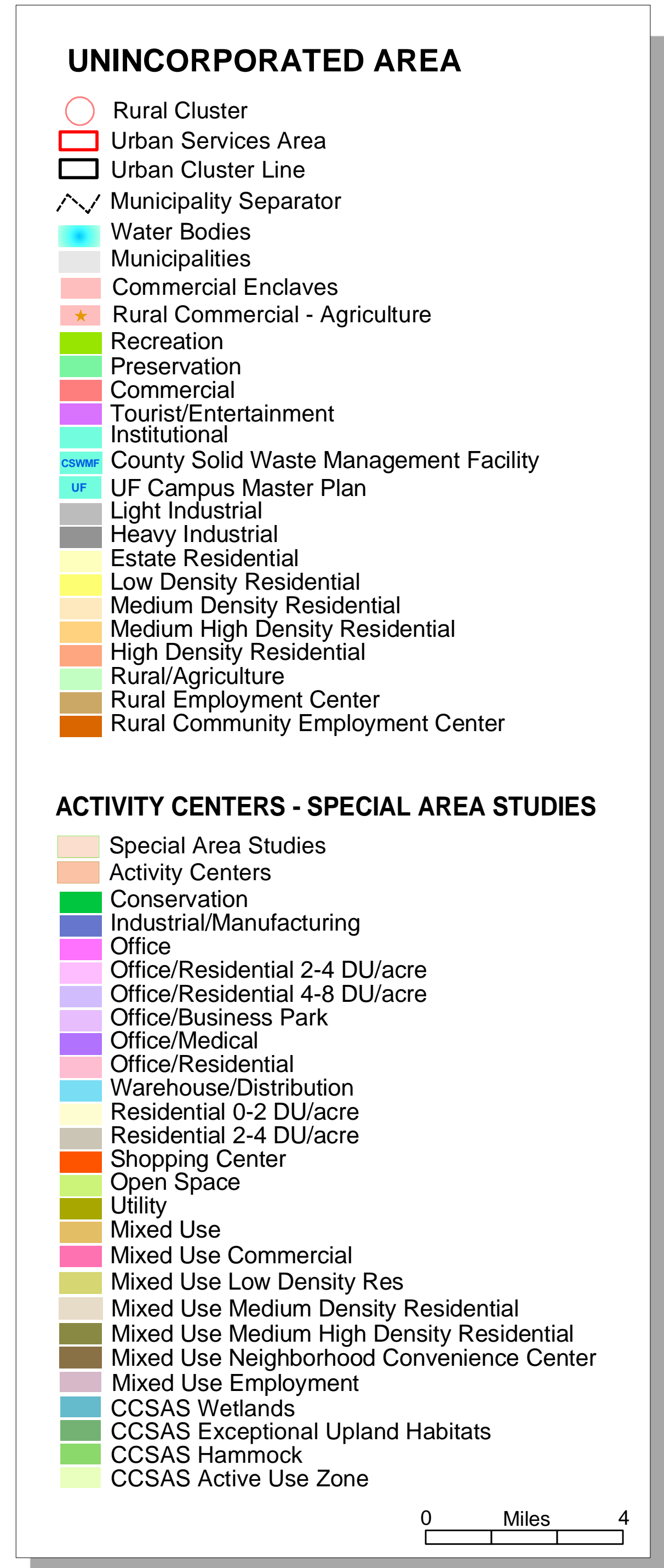
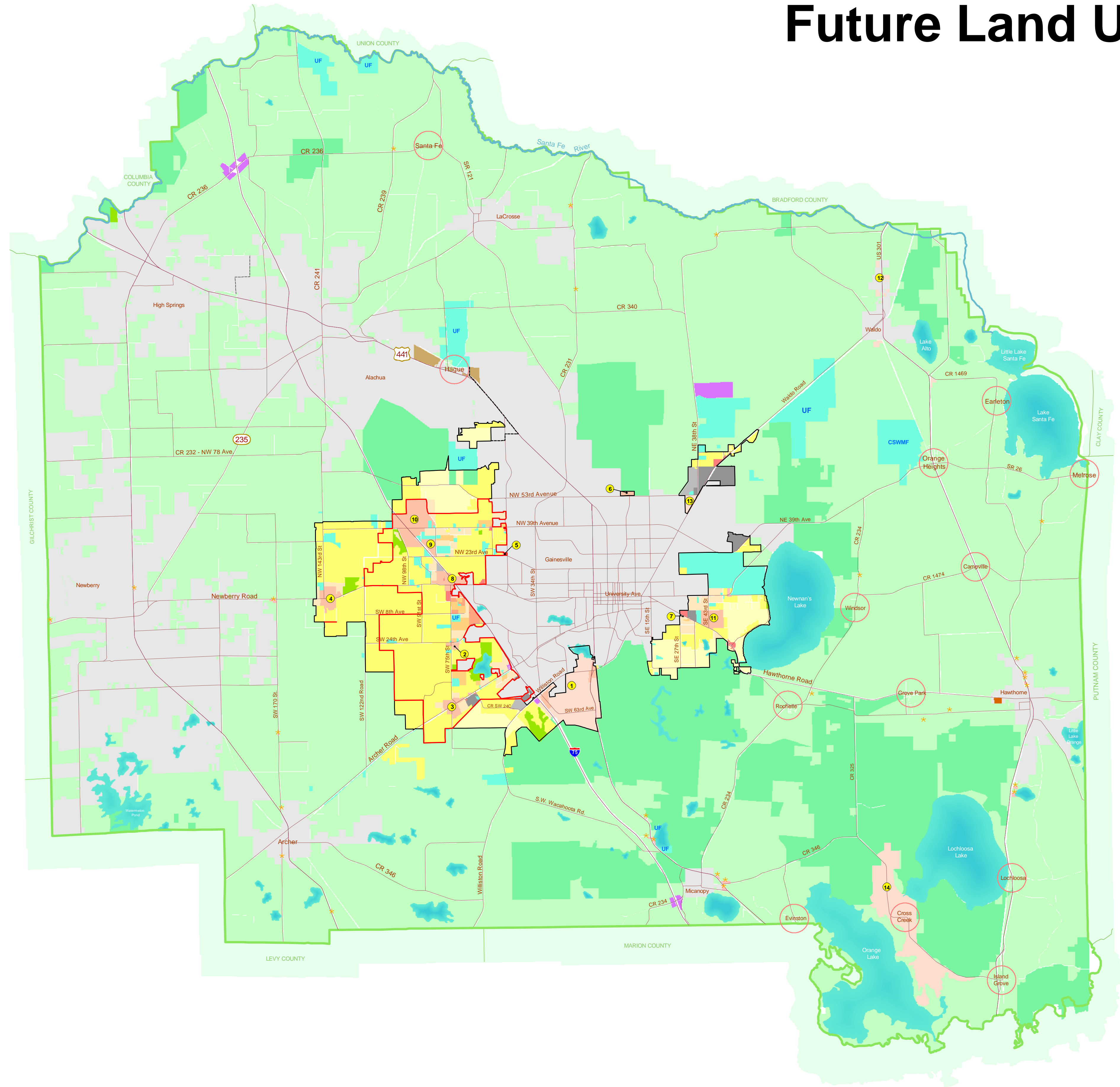
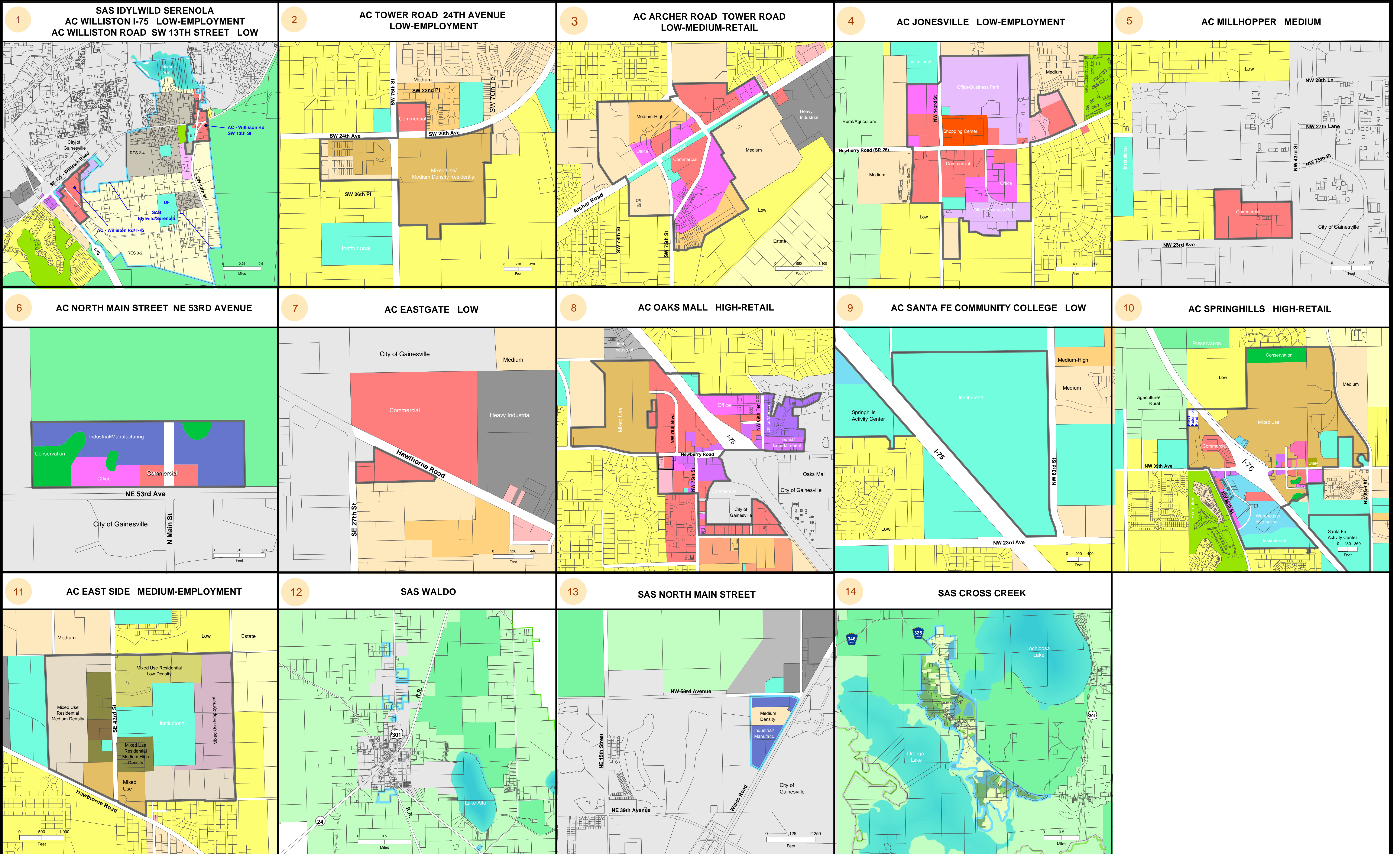


FUTURE LAND USE MAP 2030 - ALACHUA COUNTY, FLORIDA

Future Land Use - Unincorporated Area



FUTURE LAND USE - ACTIVITY CENTERS (AC) - SPECIAL AREA STUDIES (SAS)



Prepared by:
Alachua County
Department of Growth Management
10 SW 2nd Avenue, Gainesville, FL 32601
(352) 374-5249
<http://growth-management.alachuacounty.us/>

Poster Size: 36 x 64
Date of Production: 03/28/2011
File on Disk: M:\GIS\Projects\FLU_poster\FLU_2030_AC_SAS.mxd

Policy Reference

1.....AC/SAS Archer Rd/34th St.....Policy 2.2.4	11.....AC Springhills.....Policy 2.2.1
2.....SAS Idylwild/Serenola.....Objective 8.4	12.....AC East Side.....Policy 2.2.10
3.....AC Tower Rd/24th Ave.....Policy 2.2.6	13.....SAS Waldo.....Objective 8.3
4.....AC Archer Rd/Tower Rd.....Policy 2.2.7	14.....SAS North Main St.....Policy 2.5.5
5.....AC Jonesville.....Policy 2.2.9	15.....SAS Cross Creek.....Objective 8.2
6.....AC Millhopper.....Policy 2.2.2	
7.....AC North Main St/NE 53rd Ave.....Policy 2.2.8	
8.....AC Eastgate.....Map Only	
9.....AC Oaks Mall.....Policy 2.2.3	
10.....AC Santa Fe.....Map Only	

Notes:
The Future Land Use categories shown on this map are defined in the policies in the Alachua County Comprehensive Plan and are to be implemented in conjunction with the Goals, Objectives and Policies. This map is part of the Future Land Use Map.
Adopted April 5, 2011; Effective July 22, 2011; Updated as of November 11, 2011
UF Campus Master Plan properties are those identified in the UF Campus Master Plan 2005-2015, Figure 14-2, adopted 3/31/06