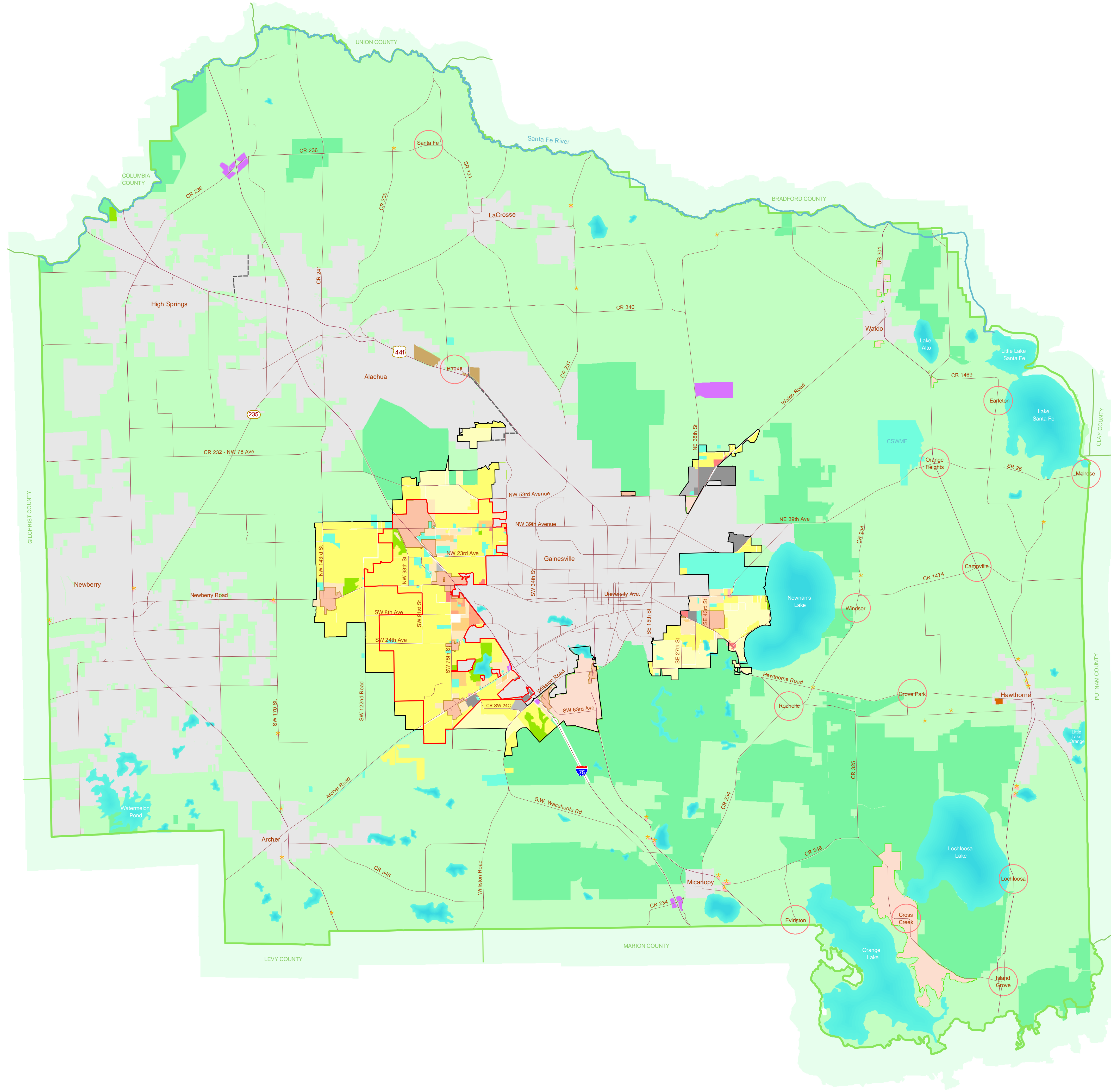


FUTURE LAND USE MAP 2030 - ALACHUA COUNTY, FLORIDA



LEGEND

- Urban Services Area
- Urban Cluster Line
- Rural Cluster
- Municipality Separator
- Commercial Enclaves
- ★ Rural Commercial - Agriculture
- Water Bodies
- Municipalities
- Special Area Studies
- Activity Centers
- Recreation
- Preservation
- Commercial
- Tourist/Entertainment
- Institutional
- County Solid Waste Management Facility
- UF Campus Master Plan
- Light Industrial
- Heavy Industrial
- Estate Residential
- Low Density Residential
- Medium Density Residential
- Medium High Density Residential
- High Density Residential
- Rural/Agriculture
- Rural Employment Center
- Rural Community Employment Center



Prepared by:
 Alachua County
 Department of Growth Management
 10 SW 2nd Avenue, Gainesville, FL 32601
 (352) 374-5249
<http://growth-management.alachuacounty.us>

Notes:

The Future Land Use categories shown on this map are defined in the policies in the Alachua County Comprehensive Plan and are to be implemented in conjunction with the Goals, Objectives and Policies. This map is part of the Future Land Use Map.

Adopted April 5, 2011; Effective July 22, 2011; Updated as of November 11, 2011

UF Campus Master Plan properties are those identified in the UF Campus Master Plan 2005-2015, Figure 14-2, adopted 3/31/06

Poster Size: 36 x 30, Date of Production: 11/11/2011, File on Disk: M:/GIS/Projects/FLU_poster/FLU_2030.mxd